



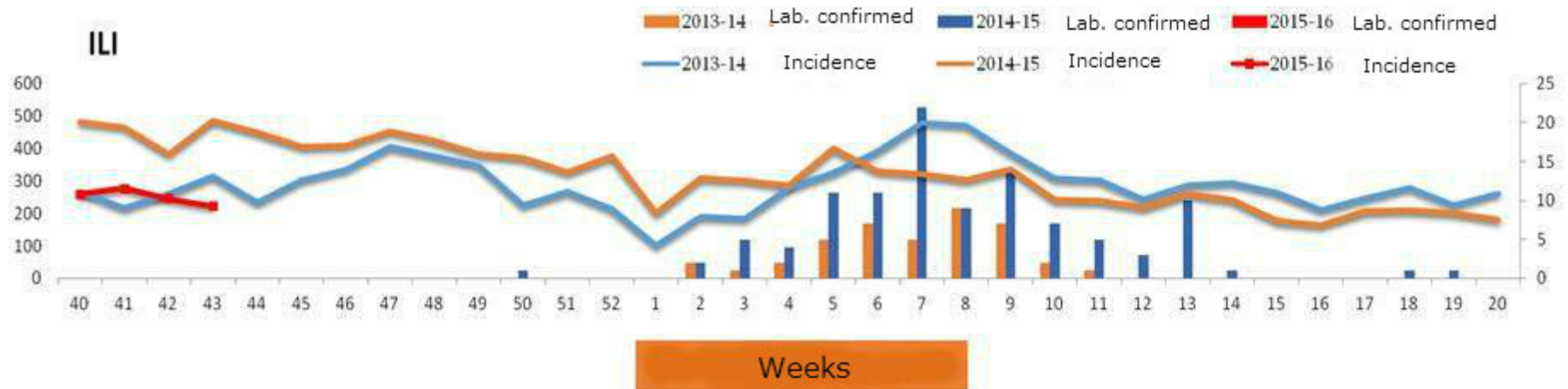
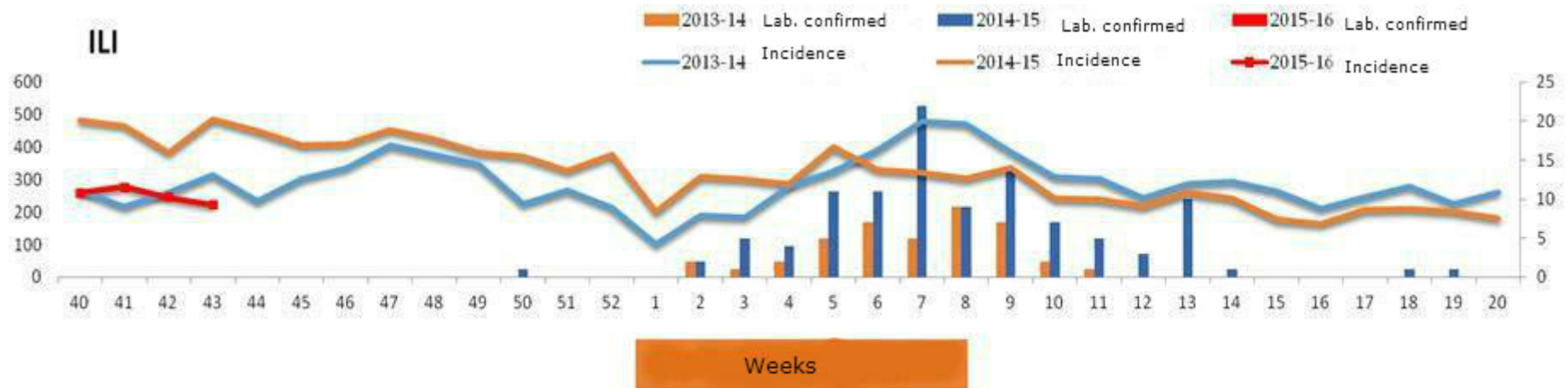
დაავადებათა ეროვნული ცენტრი
საზოგადოებრივი ჯანდაცვის
ეროვნული ცენტრი

www.ncdc.ge

Week 26 October, 2015

This weekly bulletin provides updates on threats monitored by NCDC

Influenza like diseases (ILI) and Severe Acute Respiratory infection (SARI) 2013-14; 2014-15; 2015-16 season, by sentinel bases. (In the columns laboratory-confirmed cases *)

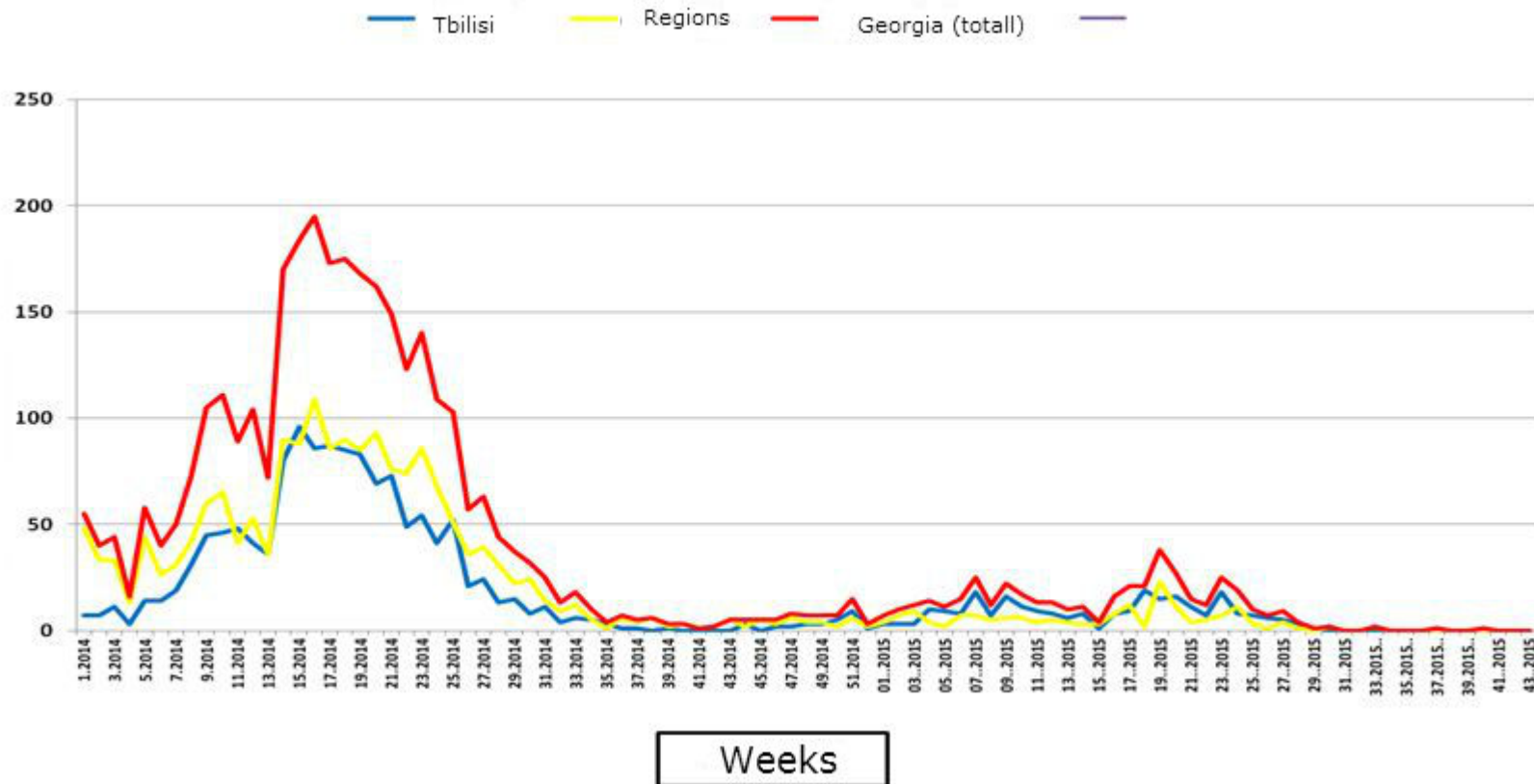


Reporting period: January 1, 2015 to present (26.10.2015)

During the reporting period number of measles cases in country was 431, incidence per 100 000 population (number of population was changed according to census that was done in 2014) – 11,5.

In Tbilisi was registered 255 measles cases, incidence per 100 000 population (number of population was changed according to census that was done in 2014) – 22,8.

Measles cases dynamics by weeks



As the chart shows, in recent weeks cases of measles were not registered. During last 2 months, only 2 cases were reported. The last case in the 40 th week. On 43 th calendar week vaccination of Measles-Rubella (MR) was done by epidemiologic statements (according to the government decree N41-20.01.2015):

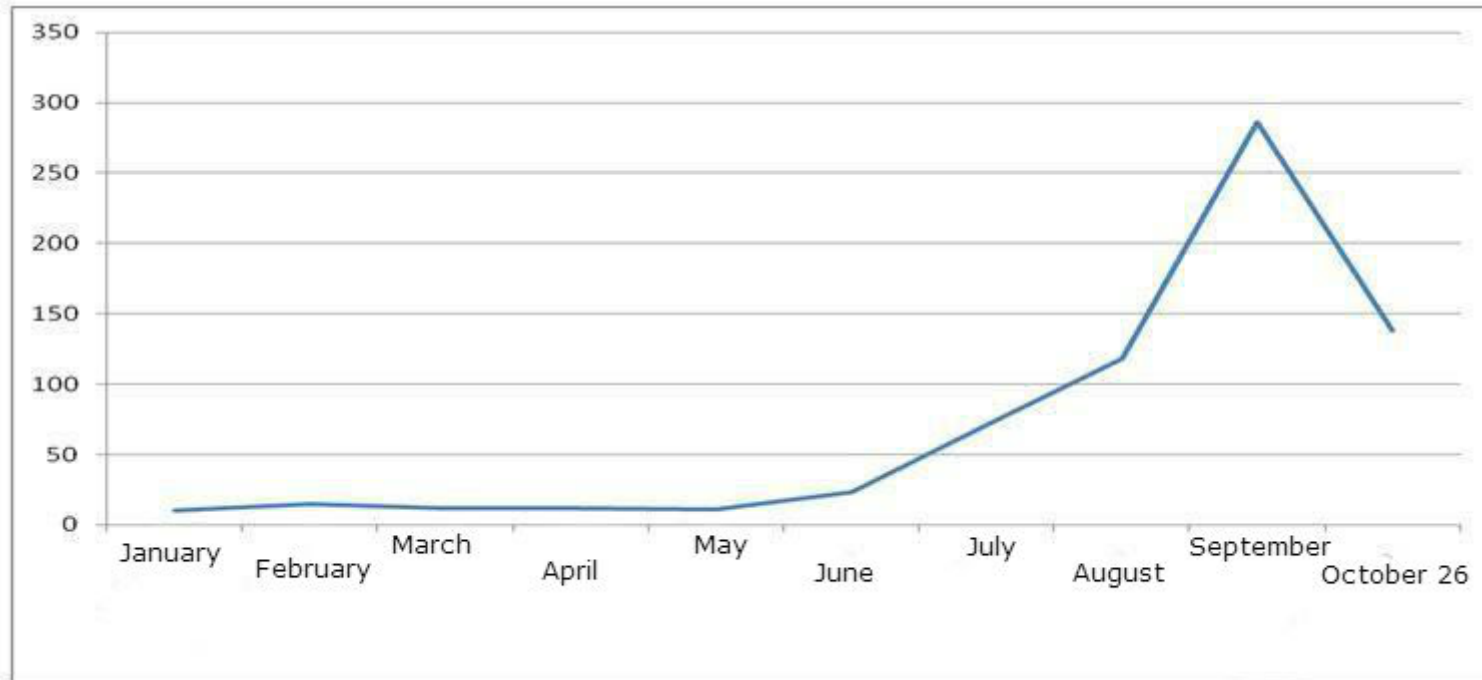
Reporting period: October 19 till 25

During the reporting period two cases of meningococemia were registred; one was 1year old child from Martvili region, another 3years old child, from Vani, both were hospitalized into Kutaisi. Seventeen cases of meningococemia were registred this year and 14 cases during the same time period in the last year.

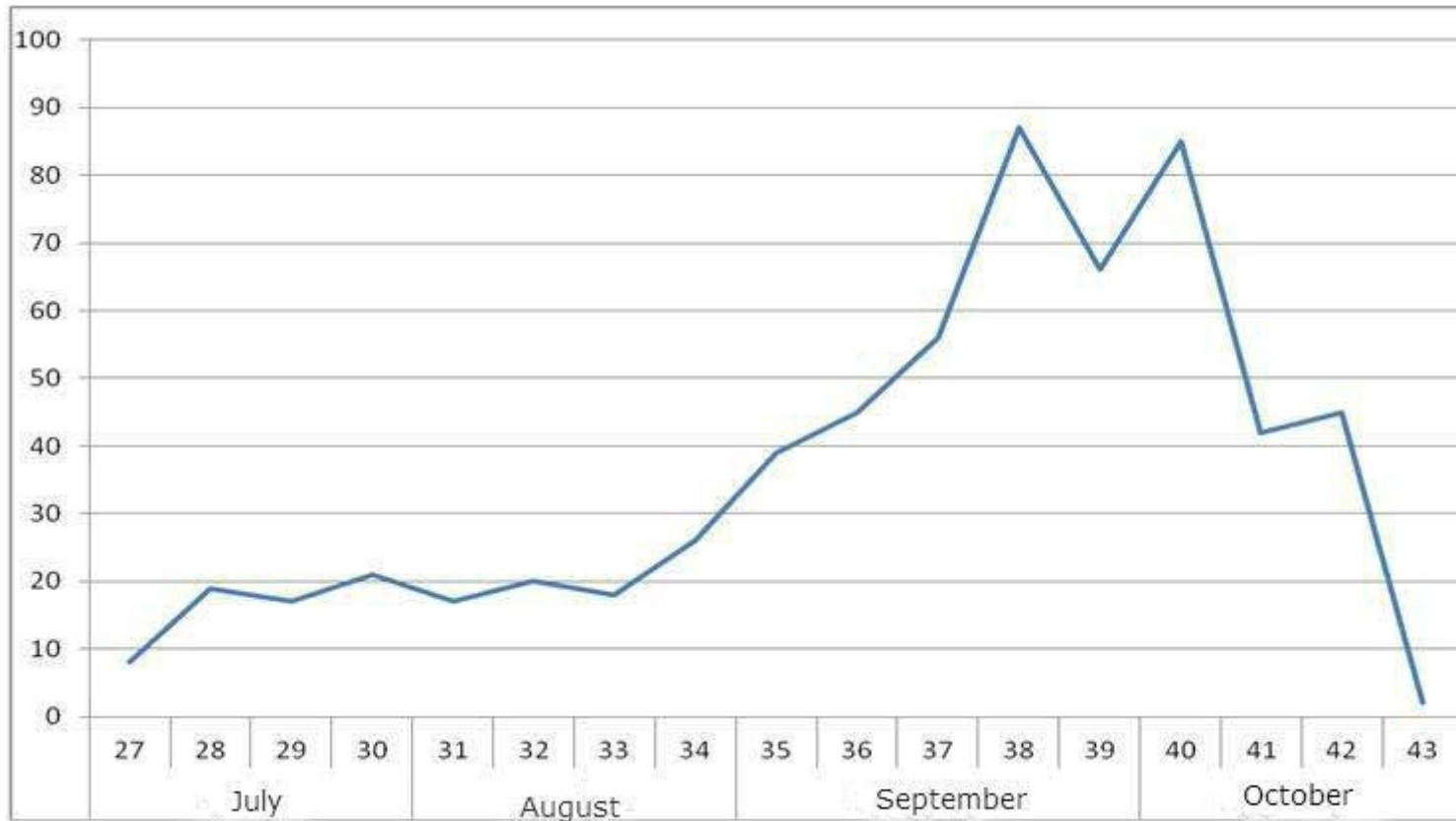
One meningitis case was caused by *St. Pneumoniae*, patient was four month infant, who lived in Tbilisi and was hospitalized into Tsitsishvili New Clinic. This infant had not received anti pneumococcal vaccination.

This year, a sharp rise in the number of *shigellosis* was detected. 696 cases of *Shigellosis* were registred, by data of October 26, 2015

Cases of *Shigelosis* in Georgia, 2015



Cases of *Shigelosis* in Georgia, July-October (27-43weeks), 2015



By October 26, 2015, 55 anthrax cases are registered, 3 of them are still in the process of investigation. There were 56 cases registered during the same time period in the last year.