



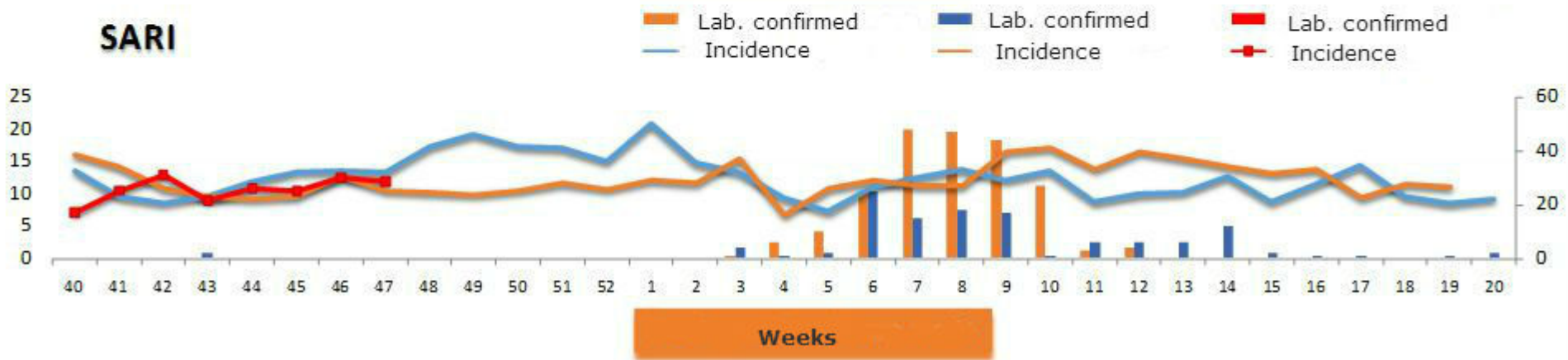
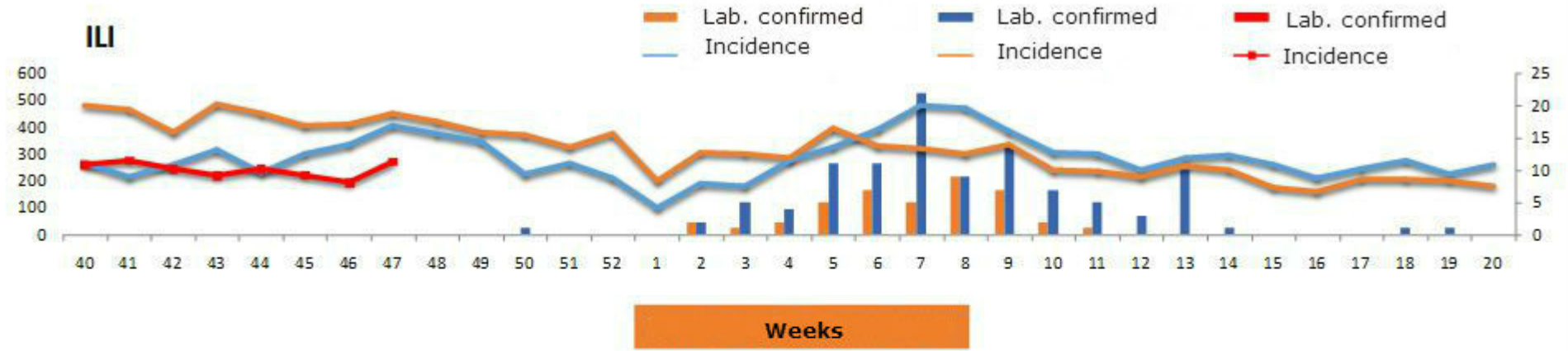
დაავადებათა კონტროლისა და  
საზოგადოებრივი ჯანმრთელობის  
ეროვნული ცენტრი

[www.ncdc.ge](http://www.ncdc.ge)

**Week 24 November, 2015**

This weekly bulletin provides updates on threats monitored by NCDC

Influenza-like illness (ILI) and Severe acute respiratory infections (SARI) 2013-14; 2014-15; 2015-16 season, by sentinel bases. (in the columns laboratory-confirmed cases \*)



Influenza-like illness (ILI) 2012-13; Seasonal incidence during 2013-14\*\* (by sentinel bases \*\*\*)

წლის კალენდარ ული კვირა	40	41	42	43	44	45	46	47	48	49	50	51	52	1	2	3	4	5	6	7	8	9	10	11	12	13	14	15	16	17	18	19
2014-15წწ	488,6	466,2	382,7	485,7	449,2	405,2	409,1	453,4	423,7	382,4	369,8	325,7	375,7	199,2	307,2	300,7	284,9	398,6	329,6	319,3	301,6	334,8	240,4	236,9	215,9	258,2	239,6	175,1	162,5	204,7	208,5	200,2
2015-16წწ	259,1	277,8	245,8	222,1	245,8	223,9	194,3	272,7																								

Severe acute respiratory infections (SARI) 2012-13; Seasonal percentage during 2013-14 \*\* (by sentinel bases \*\*\*)

წლის კალენდარ ული კვირა	40	41	42	43	44	45	46	47	48	49	50	51	52	1	2	3	4	5	6	7	8	9	10	11	12	13	14	15	16	17	18	19
2014-15წწ	16	14	10	9	8	9	12,6	10,4	10,1	9,8	10,4	11,5	10,6	12	11,5	15,3	6,6	10,7	11,9	11,1	11,1	16,4	17	13,7	16,4	15,3	14,1	13	13,7	9,2	11,4	10,9
2015-16წწ	7,1	10,5	12,9	9	10,8	10,4	12,5	11,8																								

Note:

\*laboratory confirmed cases are in absolute numbers

\*\*Incidence – number of cases per 100000 population

\*\*\*Sentinel bases – collection of statistic data from hospitals and outpatient clinics in different cities of Georgia and virology monitoring.

Epid surveillance by sentinel bases and identification of circulating respiratory pathogens, Influenza 2015-16 yy season

წლის კალენდარული კვირა	40	41	42	43	44	45	46	47	48	49	50	51	52	53	1	2	3	4	5	6	7	8	9	10	11	12	13	14	15	16	17	18	19	20			
Influenza A																																					
Influenza A/ H1																																					
Influenza A/H3																																					
Influenza B																																					
Rhinovirus	✓	✓	✓	✓	✓	✓	✓																														
Coronavirus NL63/229E /OC43/HKU1	✓			✓		✓	✓																														
Parainfluenza 1, 2, 3, 4,		✓		✓		✓	✓																														
Human metapneumovirus A/B																																					
Bocavirus		✓		✓			✓																														
Respiratory syncytial virus A/B		✓																																			
Adenovirus																																					

During the season of reporting period 2015-16 laboratory confirmed cases of influenza were not detected.

**Information on number of vaccinated against seasonal flu  
According to the findings by regions, November 24,2015**

#	Region	Total (vaccine)	Total number of vaccinated	Coverage %
1	Tbilisi	2524	2113	83,7
2	Batumi	1105	992	89,8
3	Kobuleti	149	77	51,7
4	Qeda	81	30	37,0
5	Shuakhevi	56	30	53,6
6	Khelvachauri	74	0	0,0
7	Khulo	136	50	36,8
8	Rustavi	338	338	100
9	Bolnisi	88	76	86,4
10	Dmanisi	75	75	100,0
11	Tetrickharo	100	76	76,0
12	Marneuli	221	170	76,9
13	Tsalka	43	43	100,0
14	Gardabani	100	97	97,0
15	Gori	133	133	100,0

16	Kaspi	87	10	11,5
17	Kareli	102	84	82,4
18	Khashuri	69	47	68,1
19	Telavi	74	71	95,9
20	Akhmeta	33	33	100,0
21	Gurdjaani	175	175	100,0
22	Dedoplistskaro	60	60	100,0
23	Lagodehi	117	117	100,0
24	Sagaredjo	30	30	100,0
25	Signagi	25	0	0,0
26	Kvareli	30	24	80,0
27	Mtsketa	211	211	100,0
28	Akhalgori	70	70	100,0
29	Dusheti	97	40	41,2
30	Tianeti	30	30	100,0
31	Kazbegi	20	20	100,0
32	Kutaisi	346	344	99,4
33	Terdjola	120	120	100,0
34	Samtredia	134	104	77,6
35	Tkibuli	85	85	100,0

36	Sachkhere	260	260	100,0
37	Tskaltubo	88	88	100,0
38	Chiatura	113	62	54,9
39	Kharagauli	125	95	76,0
40	Khoni	30	28	93,3
41	Vani	38	30	78,9
42	Zestafoni	144	130	90,3
43	Bagdati	45	45	100,0
44	Ozurgeti	193	116	60,1
45	Lanchkhuti	91	67	73,6
46	Chokhatauri	74	74	100,0
47	Zugdidi	249	194	77,9
48	Poti	155	0	0,0
49	Abasha	84	84	100,0
50	Khobi	14	14	100,0
51	Senaki	94	94	100,0
52	Chkhorotsku	91	33	36,3
53	Tsalendjikha	71	71	100,0
54	Martvili	80	76	95,0
55	Mestia	22	22	100,0

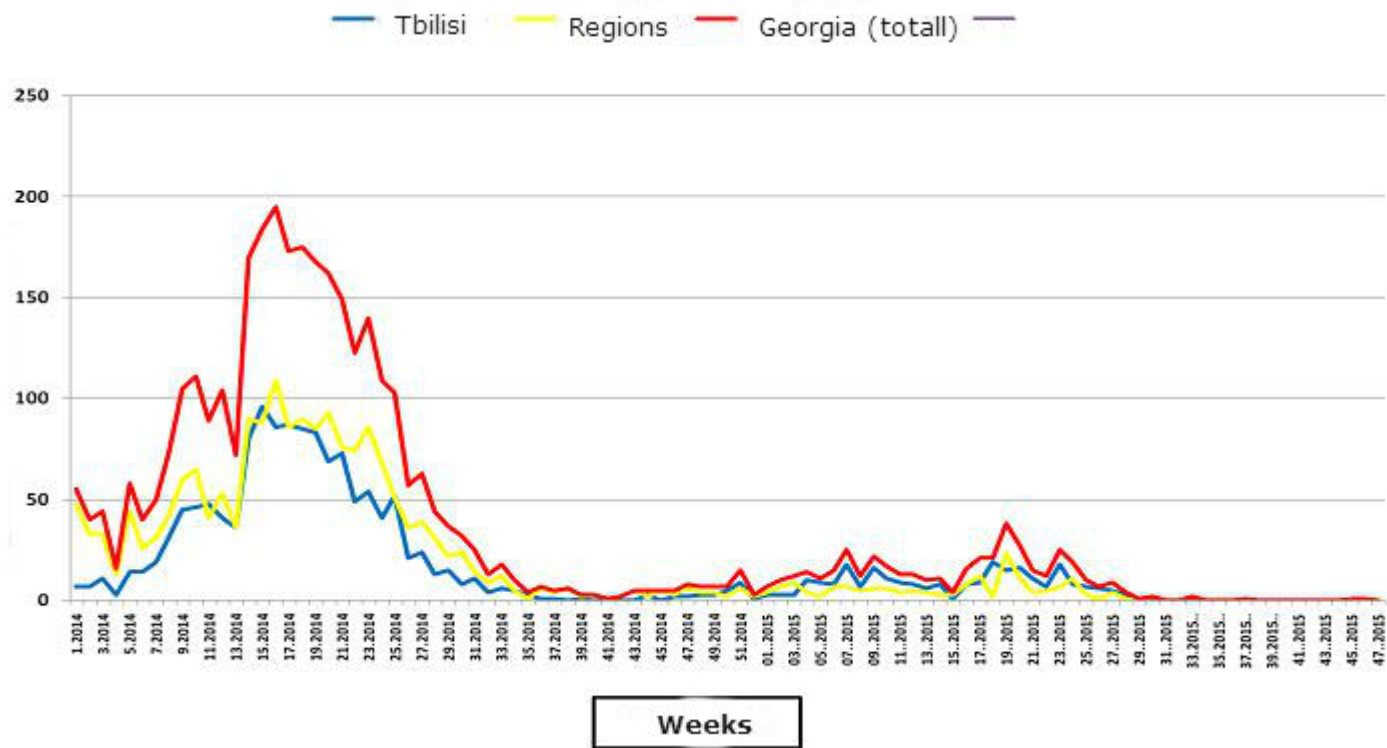
56	Ambrolauri	15	15	100,0
57	Tsageri	25	0	0,0
58	Oni	2	2	100,0
59	Lentekhi	10	0	0,0
60	Akhaltzikhe	164	73	44,5
61	Ninotsminda	182	182	100,0
62	Bordjomi	100	100	100,0
63	Adigeni	83	83	100,0
64	Akhalqalaqi	83	41	49,4
65	Aspindza	41	41	100,0
	<b>NCDC&amp;PH</b>	147	107	72,8
	<b>Georgia</b>	10000	8202	82.02



**Distribution of 5368 vaccinated beneficiaries by risk groups :**

Risk groups	Number of vaccinated
<18 year old with diabetes mellitus	124
Patients on dialysis	1600
Elderly & children from orphanage	800
Small family-type home	96
Medical staff	5582
	<b>82102</b>

Measles cases by weeks 01.01.2014-23.11.2015

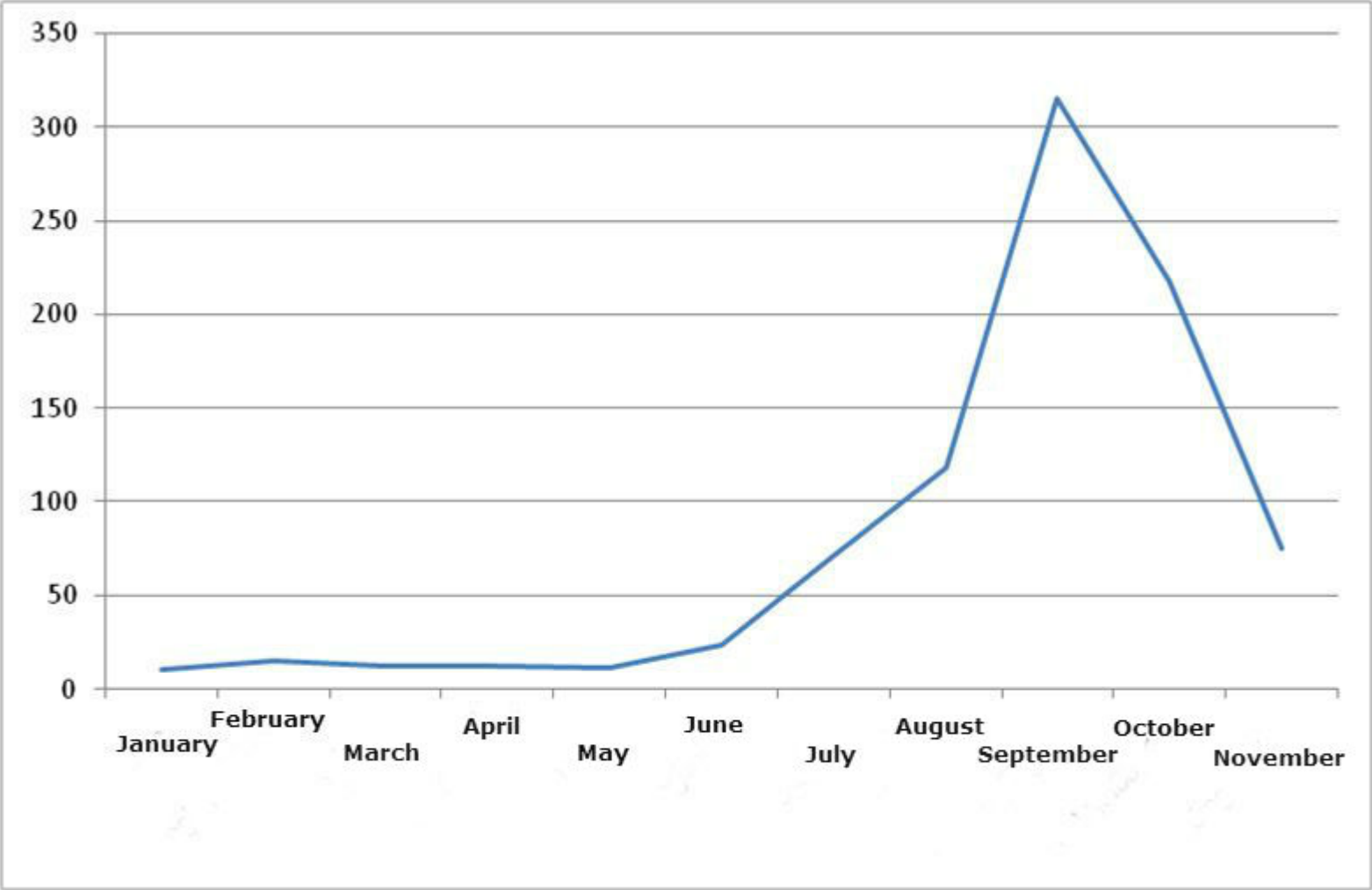


**Reporting period January 1, to present (24.11.2015)**

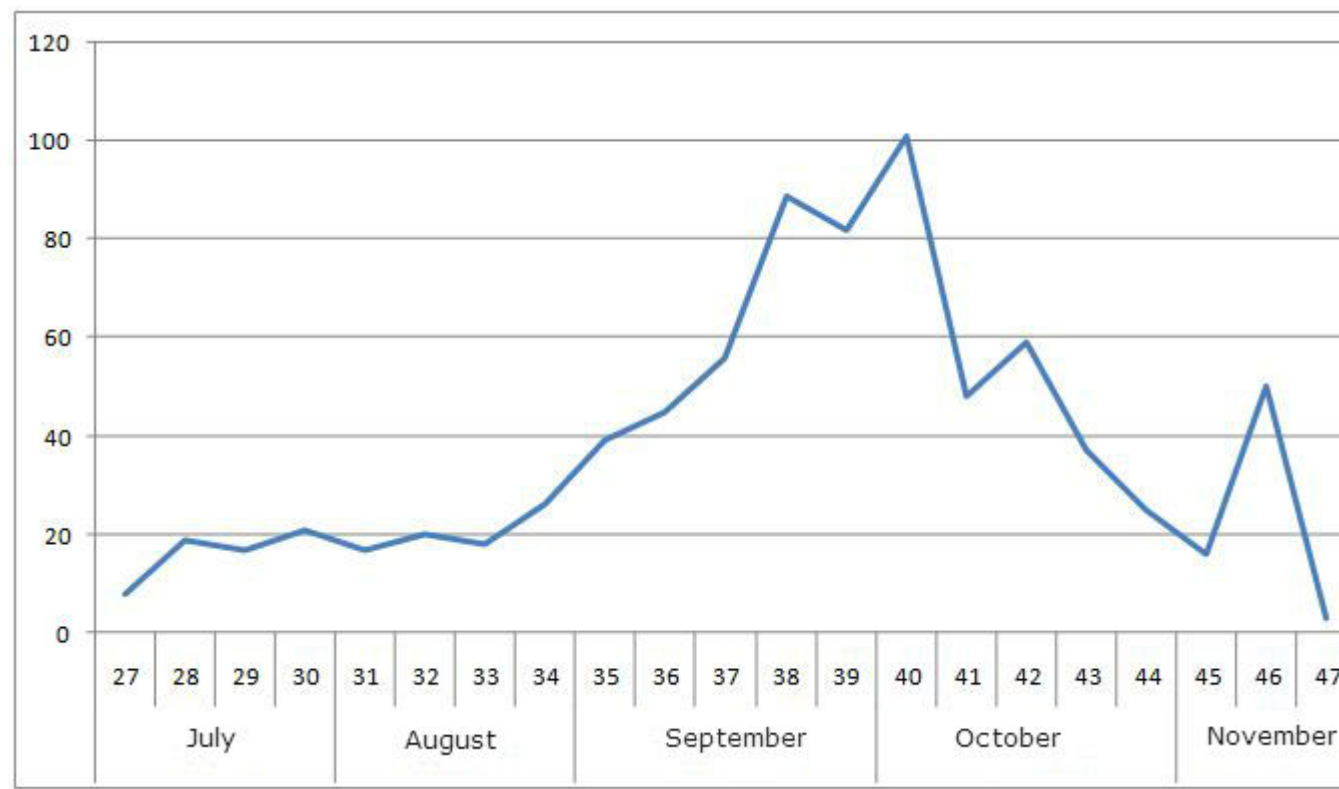
- During the reporting period number of measles cases in country was 433, incidence per 100 000 population (number of population was changed according to census that was done in 2014) – 11,6.
- In Tbilisi was registred 255 measles cases, incidence per 100 000 population (number of population was changed according to census that was done in 2014) – 22,9.

879 cases of *Shiglosis* were registered in the reporting period November 24, 2015

*Shigelosis cases in Georgia during 2015*



*Shigellosis cases in Georgia by weeks (July-November), 2015*



Increase in *Shigellosis* cases was detected on 46 week, and was due to cases in N3 kindergarten in Tbilisi: On November 10-17, 17 children were hospitalized in Tbilisi, Infectious Disease Clinic; among hospitalized 6 – from Samgori rayon N12 and 5 from N72 kindergarten, 5 – from Gldani rayon N107 kindergarten. In all cases *Shigellae Zonei* was laboratory confirmed. Epidemiologic research of all these cases is conducted by Public Health Centre epidemiologists.

In November 21 report on suspected cases of botulism was received from Infectious Pathology Center, which is 10th case in 2015. In the same period last year 6 cases of botulism was registered.